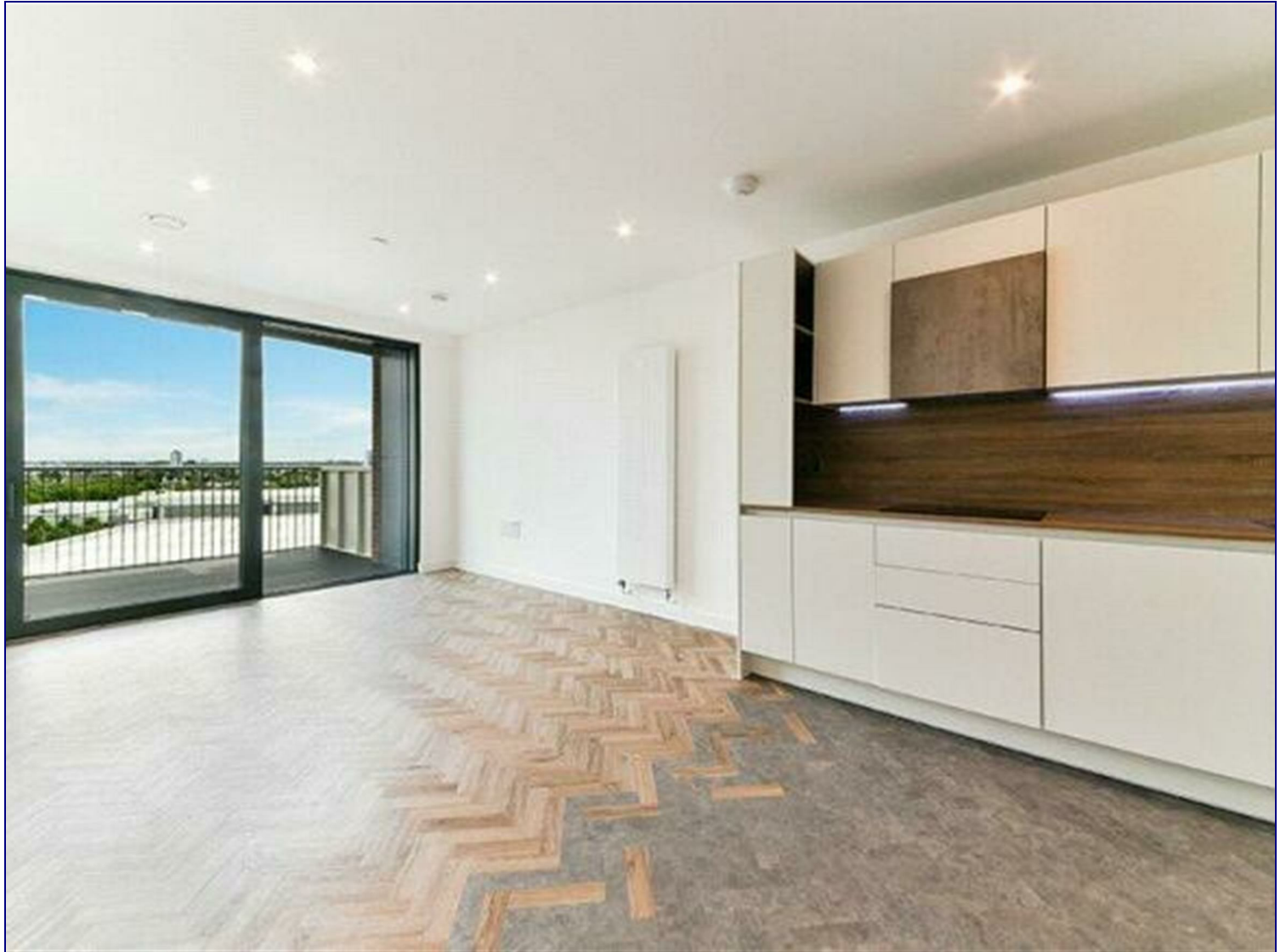


Skyline Apartments, London, E3 3TH



£2,500 Per Month

Situated in the vibrant neighborhood of Bromley-by-Bow, this 2-bedroom flat offers contemporary living with style and convenience. The spacious interior boasts two bathrooms, ensuring comfort and functionality for residents. With modern fixtures and fittings throughout, this flat provides a comfortable and inviting atmosphere.

Its prime location offers easy access to local amenities, transport links, and green spaces, making it an ideal choice for those seeking a balanced urban lifestyle. Enjoy the convenience of nearby shops, restaurants, and parks, perfect for leisurely strolls or outdoor activities. Plus, with excellent transport connections, including the nearby tube station, commuting around London is effortless. Don't miss out on the opportunity to experience modern city living at its finest in this charming Bromley-by-Bow flat.



Energy Efficiency Rating		
	Current	Potential
Very energy efficient - lower running costs		
(92 plus) A		
(81-91) B		
(69-80) C		
(55-68) D		
(39-54) E		
(21-38) F		
(1-20) G		
Not energy efficient - higher running costs		
England & Wales	EU Directive 2002/91/EC	

Environmental Impact (CO ₂) Rating		
	Current	Potential
Very environmentally friendly - lower CO ₂ emissions		
(92 plus) A		
(81-91) B		
(69-80) C		
(55-68) D		
(39-54) E		
(21-38) F		
(1-20) G		
Not environmentally friendly - higher CO ₂ emissions		
England & Wales	EU Directive 2002/91/EC	

